



INSTALLATION AND USER MANUAL "CLUTCH DEVICE FOR KIT 2000"

WS SERIES



Viale Europa, 37 - 88100 Catanzaro - Italy
Telefono: +39 0961 769696 - 769734 - 769672
E-Mail info@sirmeccanica.com
web- site www.sirmeccanica.com





The constant technological research and tradition blend together to guarantee, to our customers, a product that is always innovative and which has a highly competitive price. The experience matured in our workshops and the inquiries from our customers are used to improve and integrate the efficiency of our machines. A highly qualified technical staff, allows us to guarantee an excellent after-sale service. Availability, dynamism, direct assistance are the elements that distinguish us !!!





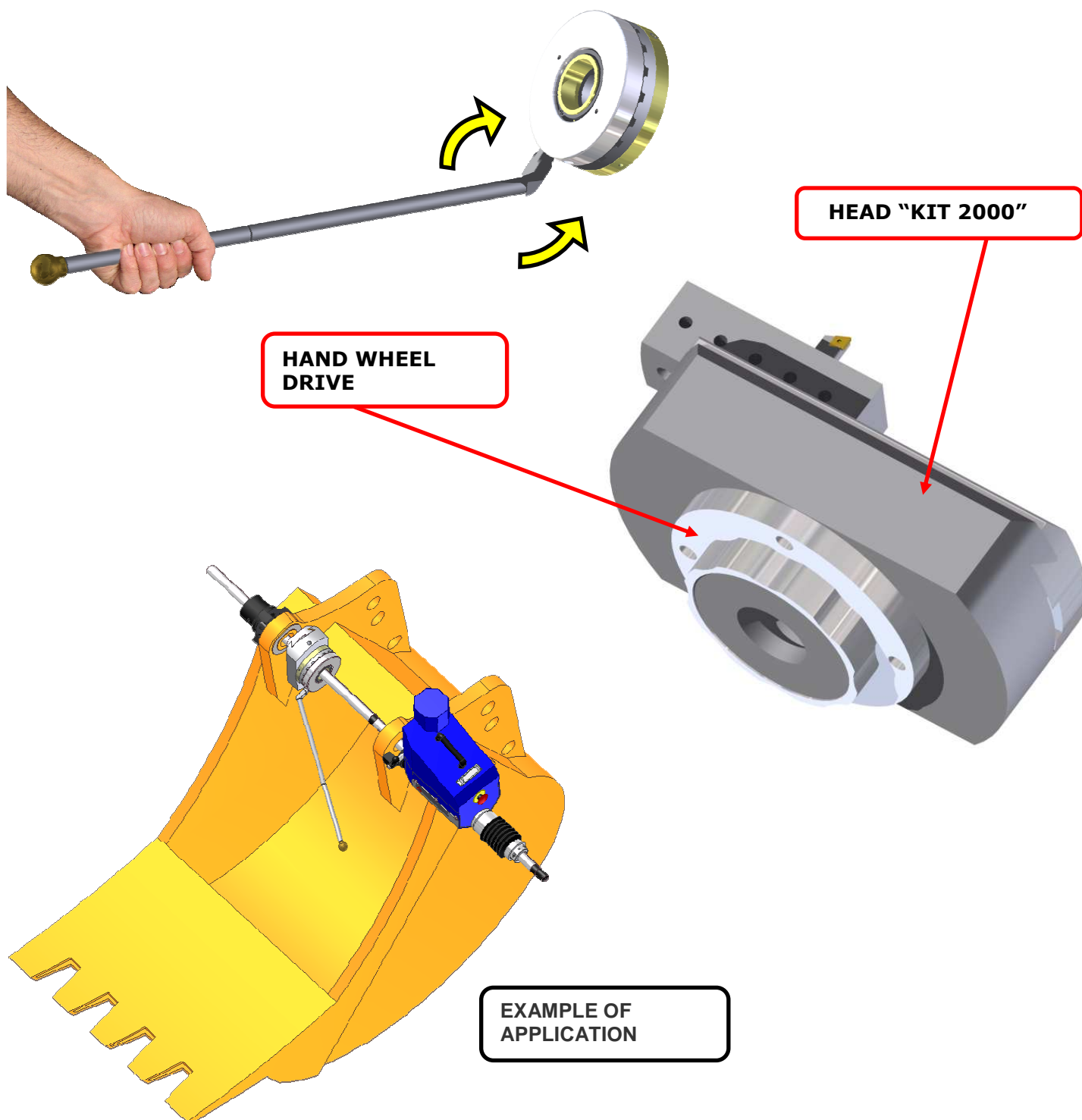
INDICE

1. Description.....	4
2. Standard components package.....	5
3. Structural Components.....	6
3.1 Drive System.....	7
3.2 Modular control lever	7
4. Installation.....	8
5. Operational procedure.....	10



1. DESCRIPTION.

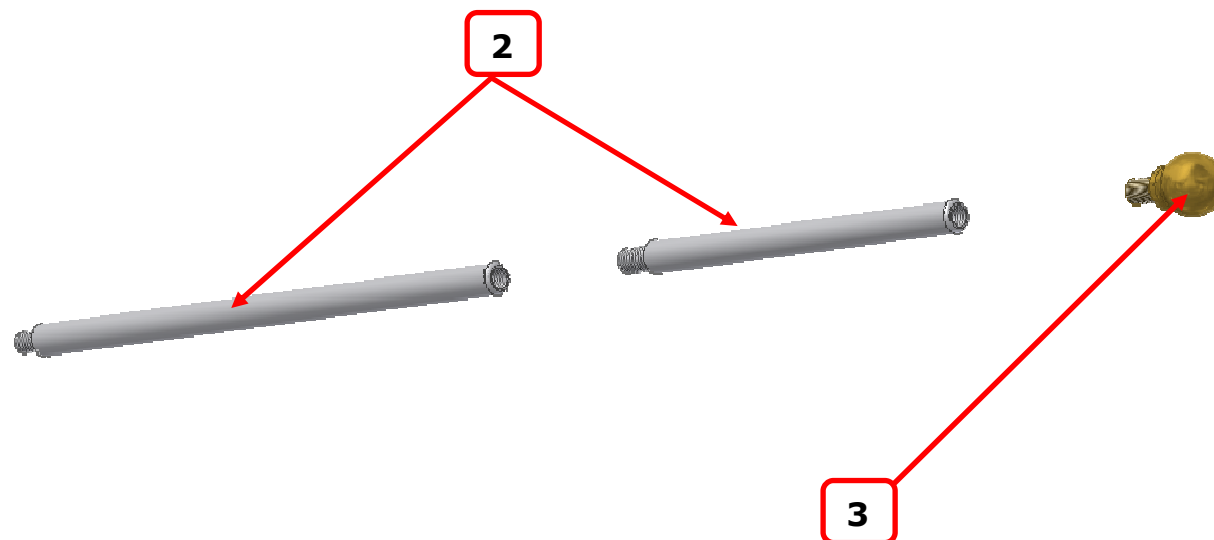
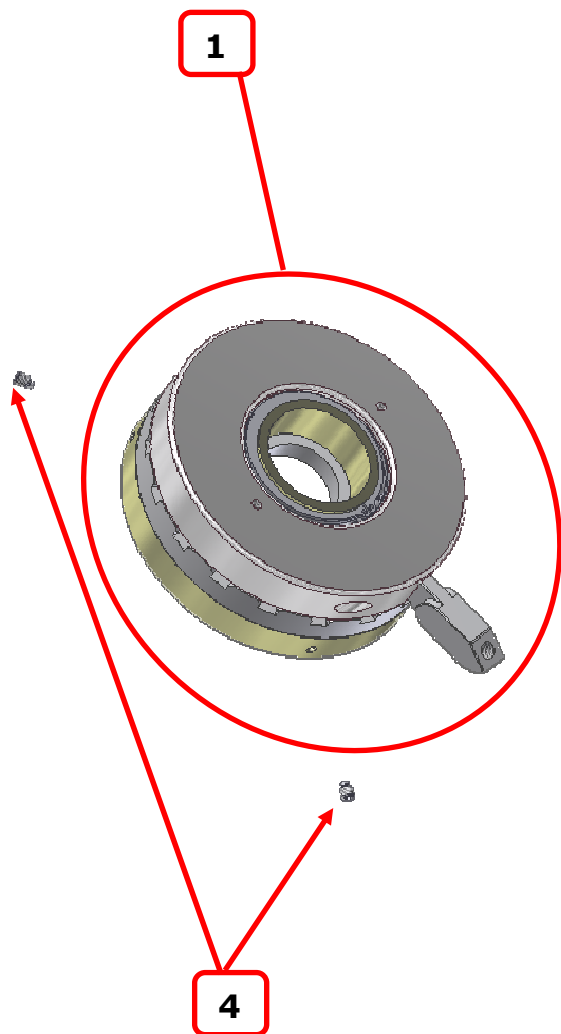
Through this mechanical device, you can comfortably manage, remotely the "**hand wheel drive**" present in the head "KIT 2000", allowing the operator to conduct and control the various stages of processing from any location and angle.





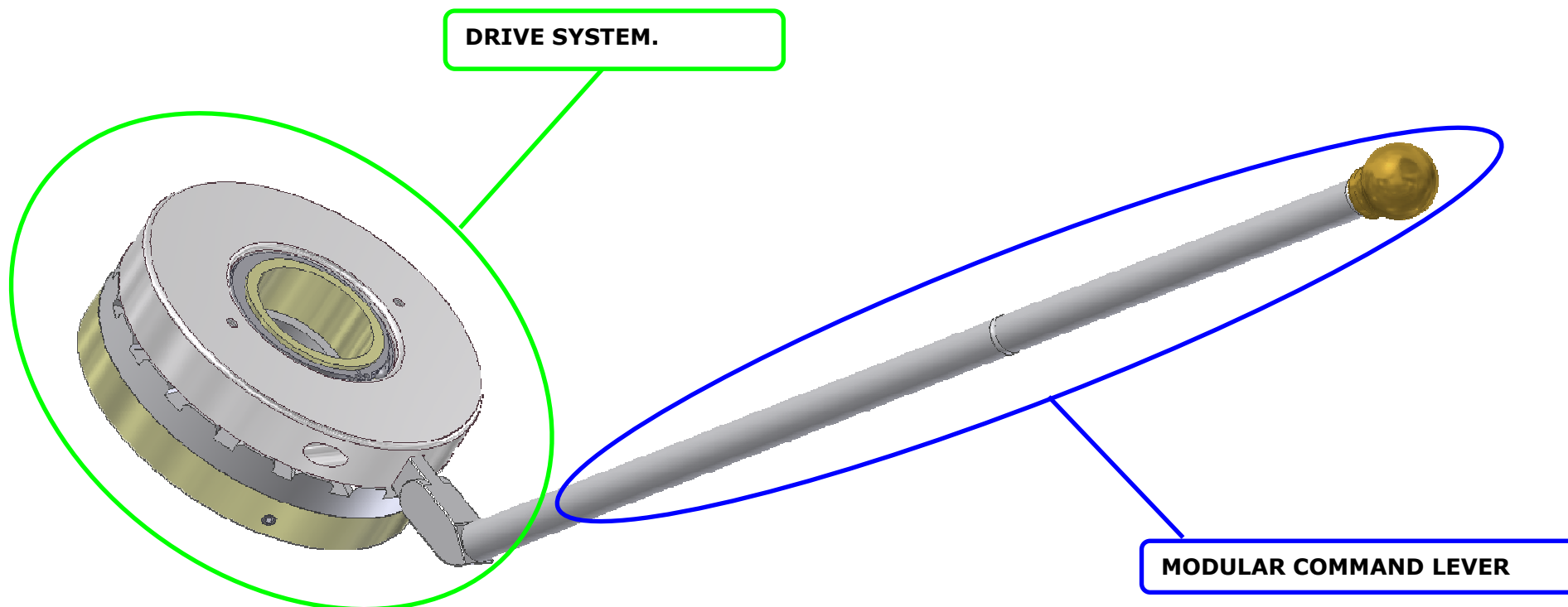
2. STANDARD COMPONENTS PACKAGE

1. N° 1 DRIVE SYSTEM.
2. N° OPTIONAL IN QUANTITY AND SIZE "ROD CONTROL MODULE".
3. N° 1 TERMINAL KNOB.
4. N° 2 TIGHTENING SCREWS.





3. STRUCTURAL ELEMENTS.



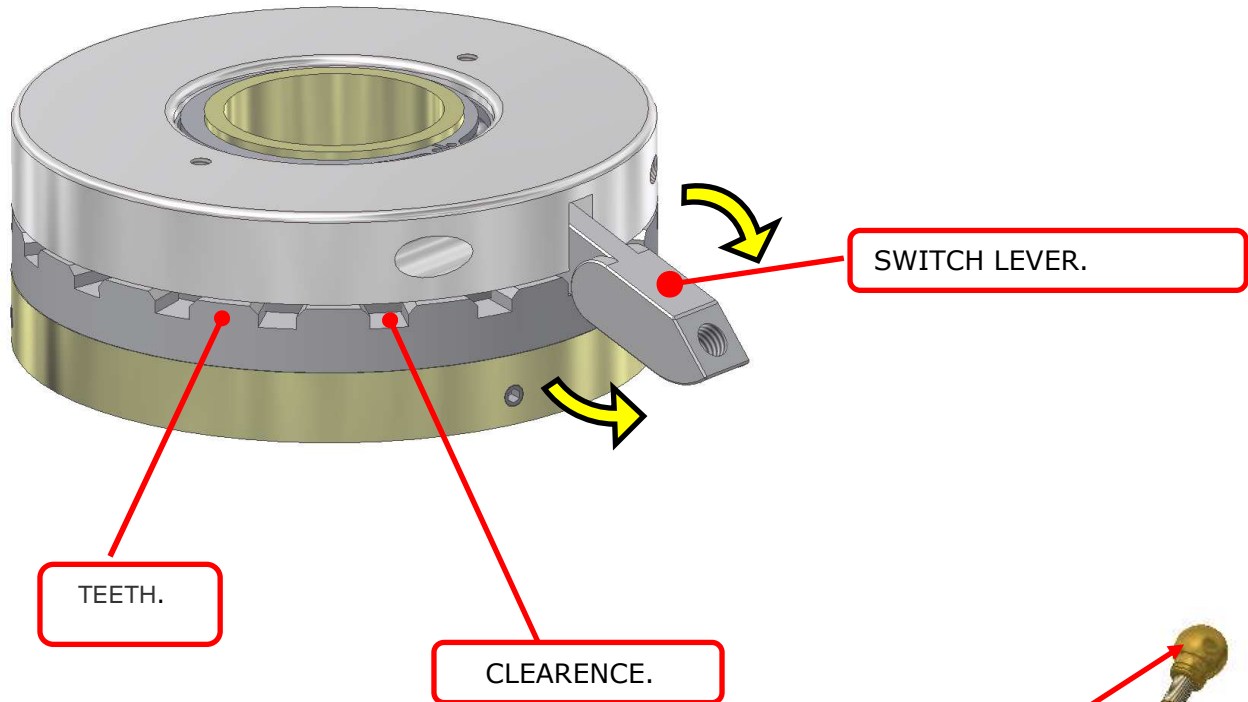
3.1 DRIVE SYSTEM.

This component includes the operating principle of the system.

Once installed on the "Drive System" on the head of "KIT 2000", it acts as an actuator for the transmission of the radial motion of the tool mounted on the same shift.

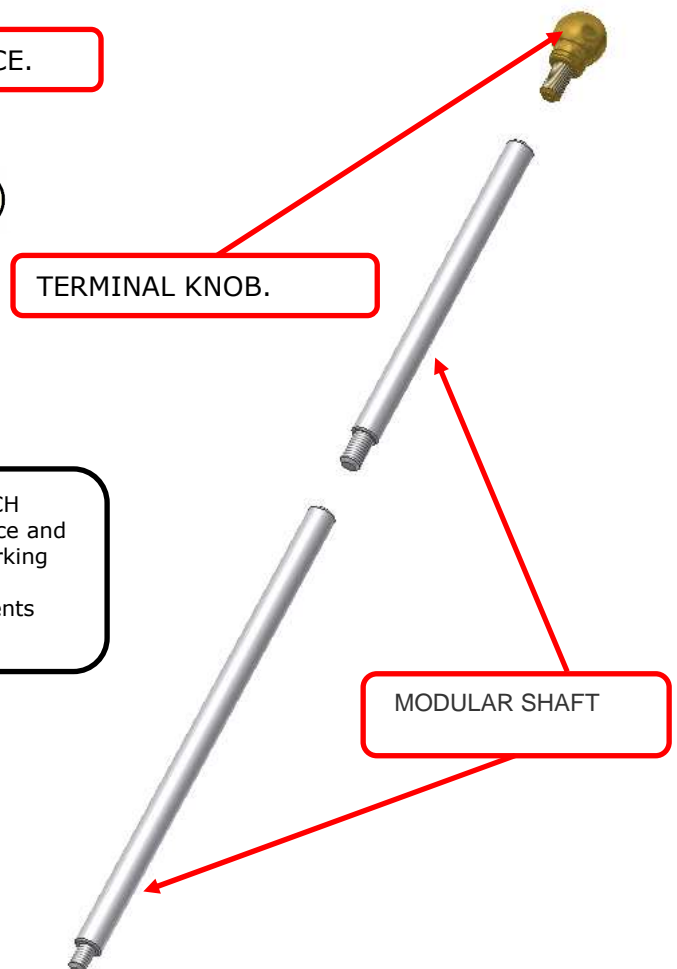
The operation of the system is through the " SWITCH LEVER", which, pushed by the operator, using the "COMMAND LEVER", to stay between the "Clearance" of the "TEETHING" system or to be taken out, implies respectively the drive (ON) or switch off (OFF) of the same.

The " DRIVE System", has an internal security system which, in case of jamming or excessive work of the tool machining, places the transmission in neutral .



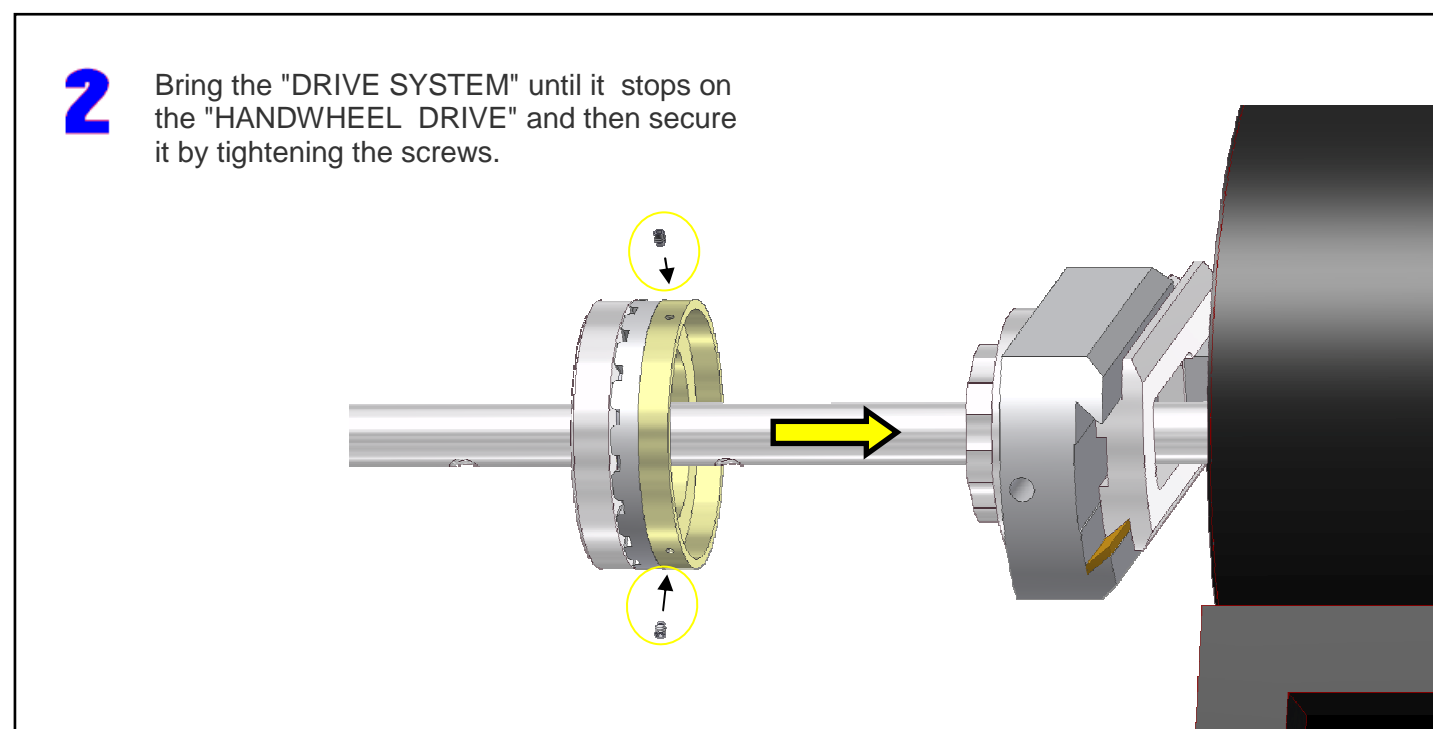
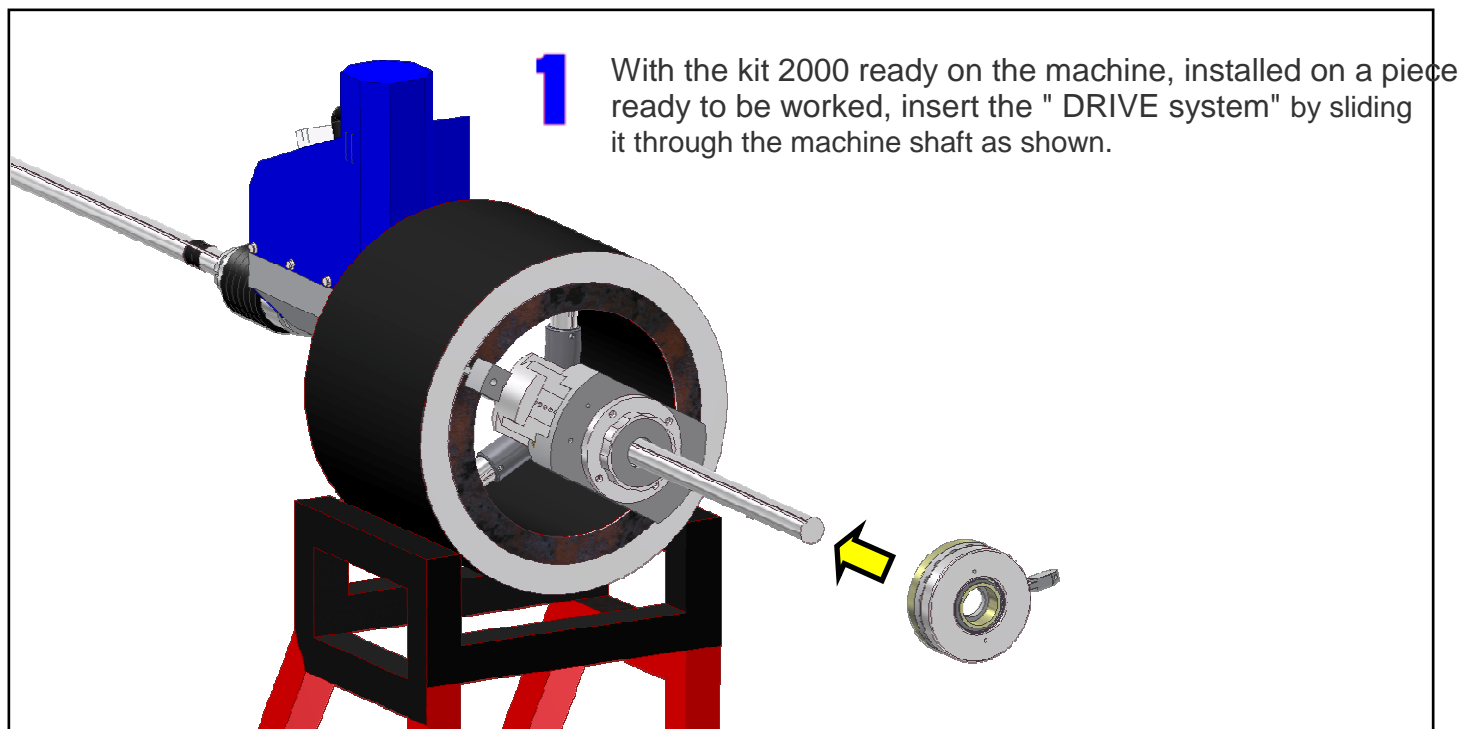
3.2 MODULAR CONTROL LEVER.

Through the "command modular lever", working on the " SWITCH LEVER", the operator, located on a right and comfortable distance and position, switches the feed of the tool on and off during the working phase;
Such lever, is extendable as desired through the apposite elements "MODULAR SHAFT".





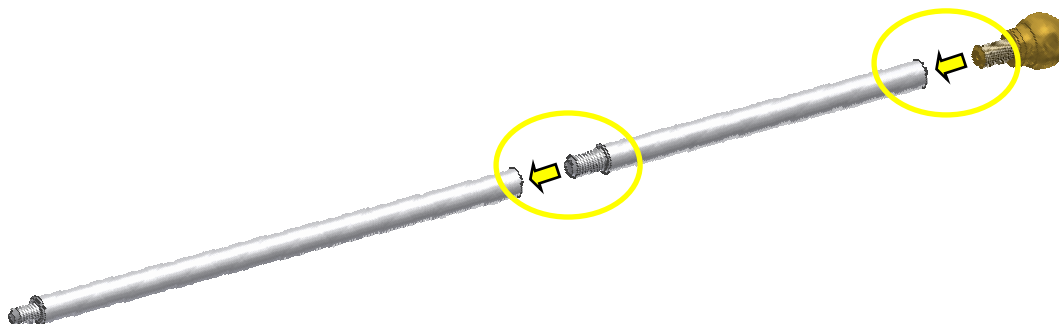
4. INSTALLATION.





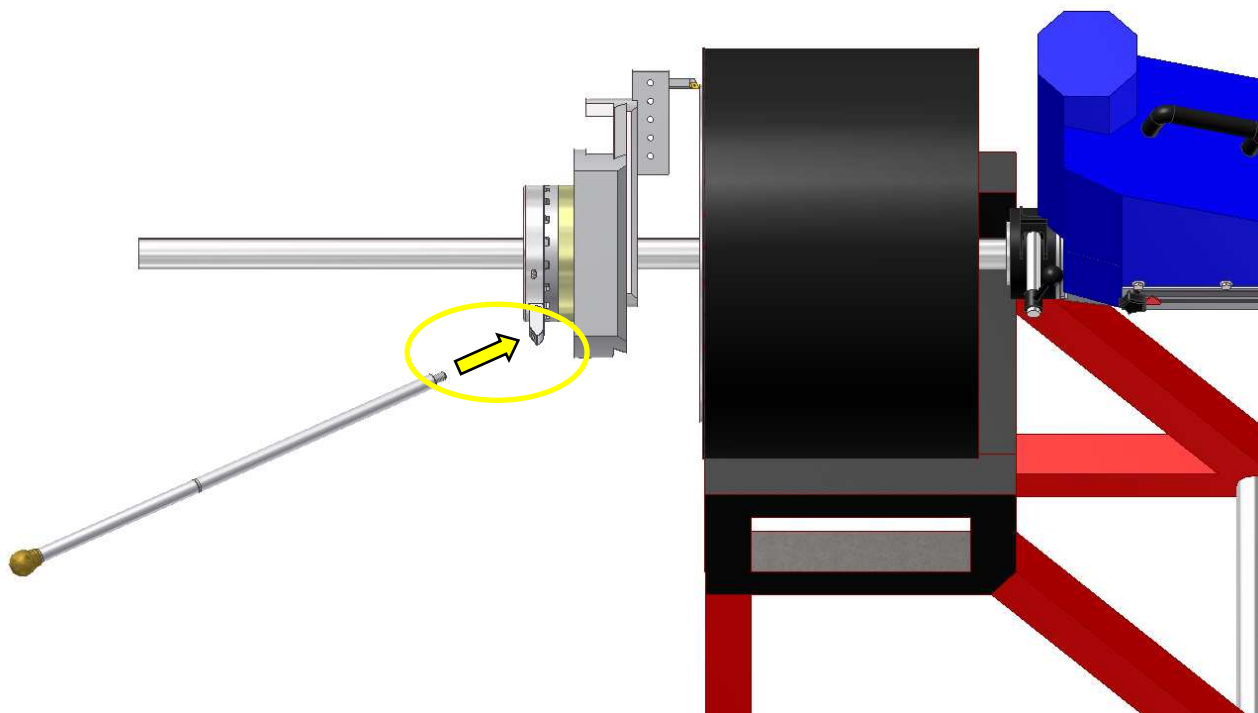
3

Compose the "MODULAR CONTROL LEVER," according to your needs, tightening the various elements "MODULAR ROD" and "TERMINAL KNOB".



4

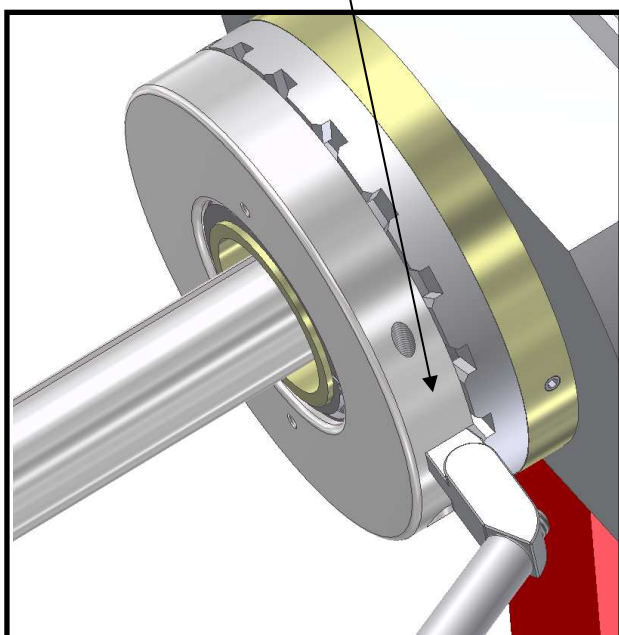
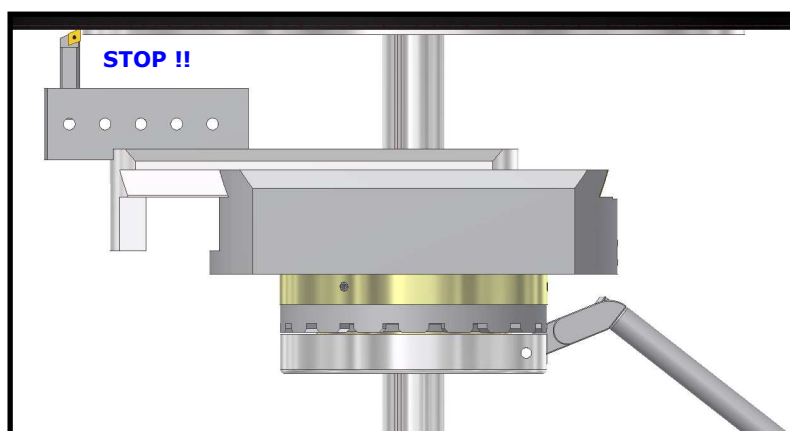
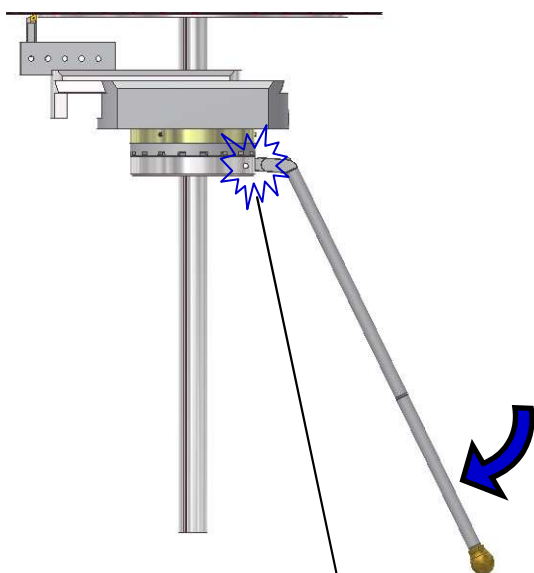
Screw the newly composed "MODULAR CONTROL LEVER" on the "SWITCH LEVER" of the "DRIVE SYSTEM".



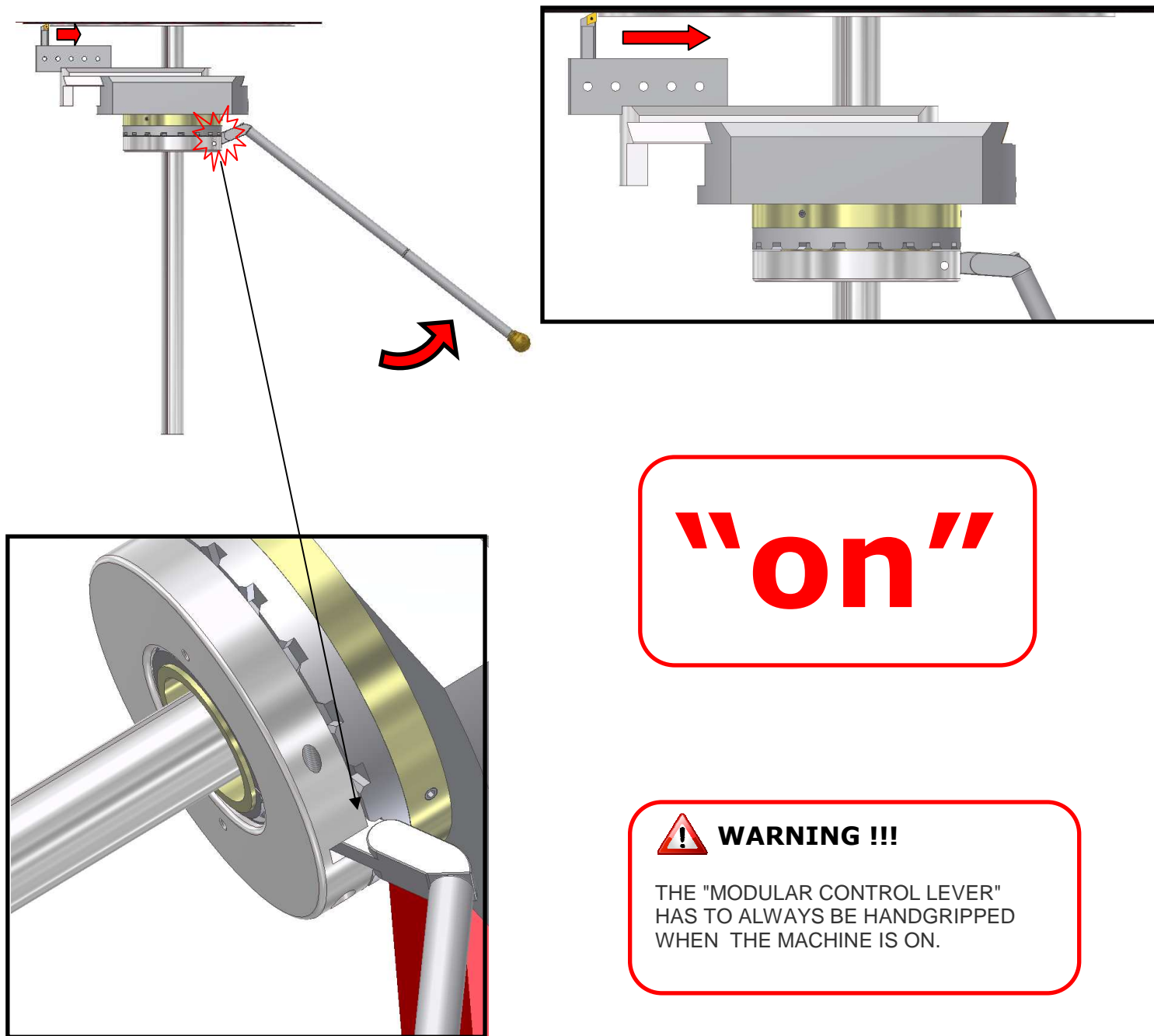
**5. OPERATIONAL PROCEDURE.**

After all installations are effected, the operator, located at the selected control position, will handgrip the "MODULAR CONTROL LEVER", and holding the "OFF" position, will be able to start the machine (see user manual and maintenance for WS machine) ;

When ready to start the translation tool radially mounted on the head of the "KIT 2000", the operator should simply move the control lever in "ON" position until the end of processing.

**"off"****WARNING !!!**

THE "MODULAR CONTROL LEVER" HAS TO ALWAYS BE HANDGRIPPED WHEN THE MACHINE IS ON.





*Confident in having satisfied your needs,
we thank you for your choice !!!*



SIR MECCANICA S.p.A.

Viale Europa, 37 – 88100 - Catanzaro

tel. ++39 0961.769696-769734-769672 -

fax ++39 0961 769543

email: info@sirmeccanica.com

www.sirmeccanica.com